

P
R
O
G
R
A
M

Aspiring Administrators



WORKSHOP

March 4, 2026

Hilton Garden Inn
1220 South Grand Ave, Sun Prairie



Because Leadership Matters

The Workshop Schedule

7:30 am	Registration and Coffee Service.....Prairie Room A
8:00	Welcome and Overview of the Impactful School Administrator
8:45	The Leader's Challenge: Tips from Experienced School Administrators <ul style="list-style-type: none">• Cultivating Culture and Community Sarah Brehm• Managing Systems and the Work Scott Mantei
10:00	Break
10:15	Administrative In-Basket Exercises <ul style="list-style-type: none">Elementary.....Prairie Room AHigh School/Middle School.....Prairie Room B
11:15	Check-in, DeBrief, and Reflections
11:30	Lunch
12:15	Envisioning Yourself in the Role - Reflections of New Building Leaders Sarah Lang and Mike Stoughtenger
1:00	Break
1:15	Getting the Job Rich Appel <ul style="list-style-type: none">• The School Administrator Selection Process• Identifying Fit and Timing• Tips for the Applicant
2:15	Stretch Break
2:20	WECAN Mechanics and Application Supports Steve Schroeder
2:50	Potential Next Steps
3:00 pm	Adjourn

Presenters

Scott Mantei, Principal
Grafton High School
Grafton School District
smantei@grafton.k12.wi.us

Sarah Brehm, Principal
Jackson Elementary School
Janesville School District
sarah.brehm@janesville.k12.wi.us

Sarah Lang, Principal
Ixonia Elementary School
Oconomowoc School District
langs@oasd.org

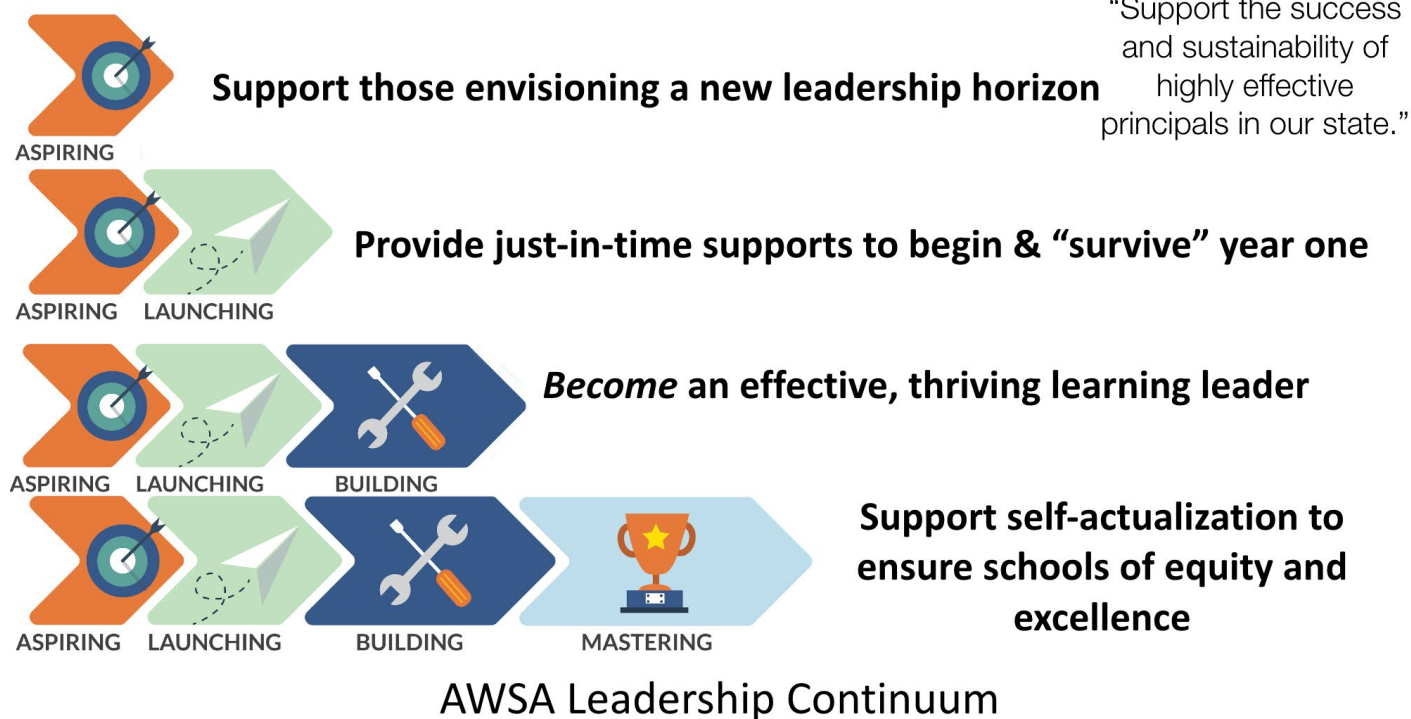
Rich Appel, District Administrator, Retired
Horicon School District
appsman99@gmail.com

Mike Stoughtenger, Associate Principal
Mauston High School
Mauston School District
mstoughtenger@maustonschools.org

Yaribel Rodriguez, Director of Urban Leadership
AWSA
yaribel@awsa.org

Joe Schroeder, Associate Executive Director
AWSA
joeschroeder@awsa.org

Steve Schroeder, Director of Administrator & Analysis
AWSA
steve@awsa.org



AWSA Staff

Jim Lynch - jimlynch@awsa.org: contact Jim with legal issues/professional concerns/ideas and suggestions

Joe Schroeder - joeschroeder@awsa.org: contact Joe with professional learning questions/professional concerns

Tammy Gibbons - tammygibbons@awsa.org: contact Tammy with professional learning recommendations/coaching

Yaribel Rodriguez - yaribel@awsa.org: contact Yari with questions about professional learning services for urban leaders

Steve Schroeder - steve@awsa.org: contact Steve with administrative/general questions/accounting

Kathy Gilbertson - kathy@awsa.org: contact Kathy with professional learning programming questions

Robin Herring - robinherring@awsa.org: contact Robin with cancellations/membership/payment concerns

Katie Lowe - katie@awsa.org: contact Katie with website questions/Principal of the Year Program

Norene Hooker - norene@awsa.org: contact Norene with general association/registration/accounting questions

www.awsa.org
(608) 241-0300

Corporate Supporters

Keystone

Fenworks

Diamond

Astraios Financial
Renaissance

Platinum

Empire Photography

Gold

AAA
Conscious Discipline
IXL
Learning Blade
Lee Recreation
Plunkett Raysich Architects LLP
Quill
UW-River Falls
Yondr

Silver

BoardmanClark
Lifetouch
Marquette University