

P
R
O
G
R
A
M

Aspiring Administrators



WORKSHOP

April 15, 2026

Wilderness Resort
45 Hillman Road, WI Dells



Because Leadership Matters

The Workshop Schedule

7:30 am	Registration and Coffee Service.....Wilderness 1
8:00	Welcome and Overview of the Impactful School Administrator
8:45	The Leader's Challenge: Tips from Experienced School Administrators <ul style="list-style-type: none">• Cultivating Culture and Community Amy Fassbender• Managing Systems and the Work Olin Morrison
10:00	Break
10:15	Administrative In-Basket Exercises <ul style="list-style-type: none">Elementary.....Wilderness 1High School/Middle School.....Glacier AB
11:15	Check-in, DeBrief, and Reflections
11:30	Lunch.....Wilderness 4
12:15	Envisioning Yourself in the Role - Reflections of New Building Leaders Allyssa Anderson and Mike Ruth
1:00	Break
1:15	Getting the Job Tanya Kotlowski <ul style="list-style-type: none">• The School Administrator Selection Process• Identifying Fit and Timing• Tips for the Applicant
2:15	Stretch Break
2:20	WECAN Mechanics and Application Supports Steve Schroeder
2:50	Potential Next Steps
3:00 pm	Adjourn

Presenters

Allyssa Anderson, Principal/Dir of Student Svcs
C.L. Robinson Elementary School
Laona School District
aanderson@laona.k12.wi.us

Amy Fassbender, Principal
Lodi Primary School
Lodi School District
fassbam@lodischoolswi.org

Tanya Kotlowski, District Administrator
Necedah School District
kotlowski@necedahschools.org

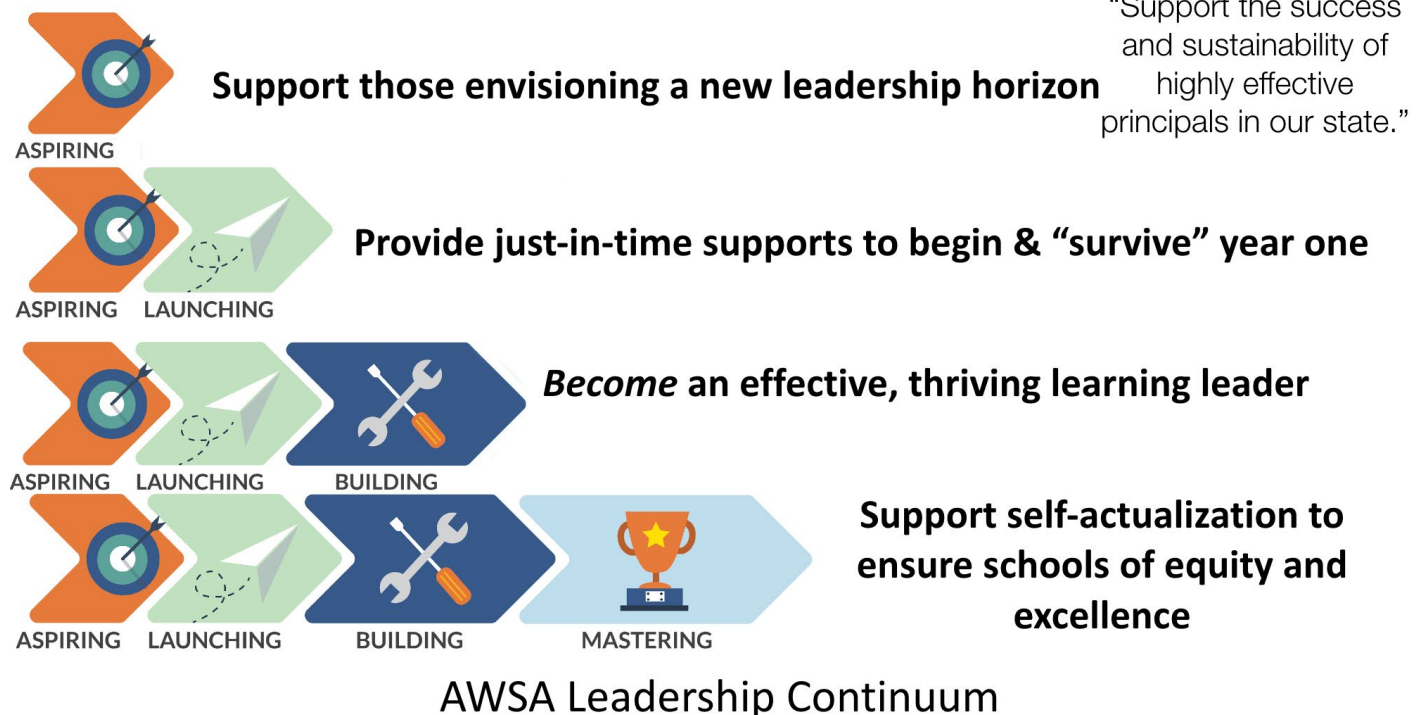
Olin Morrison, Principal
Ellsworth Middle School
Ellsworth Community School District
morrisono@ellsworth.K12.wi.us

Yaribel Rodriguez, Director of Urban Leadership
AWSA
yaribel@awsa.org

Mike Ruth, Associate Principal
Greenfield High School
Greenfield School District
michael.druth@yahoo.com

Joe Schroeder, Associate Executive Director
AWSA
joeschroeder@awsa.org

Steve Schroeder, Director of Administrator & Analysis
AWSA
steve@awsa.org



AWSA Staff

Jim Lynch - jimlynch@awsa.org: contact Jim with legal issues/professional concerns/ideas and suggestions

Joe Schroeder - joeschroeder@awsa.org: contact Joe with professional learning questions/professional concerns

Tammy Gibbons - tammygibbons@awsa.org: contact Tammy with professional learning recommendations/coaching

Yaribel Rodriguez - yaribel@awsa.org: contact Yari with questions about professional learning services for urban leaders

Steve Schroeder - steve@awsa.org: contact Steve with administrative/general questions/accounting

Kathy Gilbertson - kathy@awsa.org: contact Kathy with professional learning programming questions

Robin Herring - robinherring@awsa.org: contact Robin with cancellations/membership/payment concerns

Katie Lowe - katie@awsa.org: contact Katie with website questions/Principal of the Year Program

Norene Hooker - norene@awsa.org: contact Norene with general association/registration/accounting questions

www.awsa.org
(608) 241-0300

Corporate Supporters

Keystone

Fenworks

Diamond

Astraios Financial
Renaissance

Platinum

Empire Photography

Gold

AAA
Conscious Discipline
IXL
Learning Blade
Lee Recreation
Plunkett Raysich Architects LLP
Quill
UW-River Falls
Yondr

Silver

BoardmanClark
Lifetouch
Marquette University